

Description

HCS DIN Rail Adapter for RJ45 Keystone Jacks is compatible with DIN Rail TH35 according to DIN EN60715 and with HCS CAT6A Tool-Less shielded keystone jack P/N J6A-00826.

HCS DIN Rail Adapter has grounding spring, covered station ID and optional covers.

It has 1DU width (<18mm) according to DIN 43880.

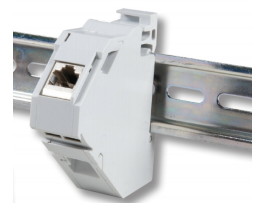
Proper use of HCS DIN Rail adapters, along with all HCS cabling components provide high-quality cabling systems which are supported by the Century™ Lifetime Warranty and the DoubleSafe™ QA program as a part of complete HCS cabling system.

Applications

Side-by-side mounting on DIN Rails in LAN cabling systems.

Benefits & Features

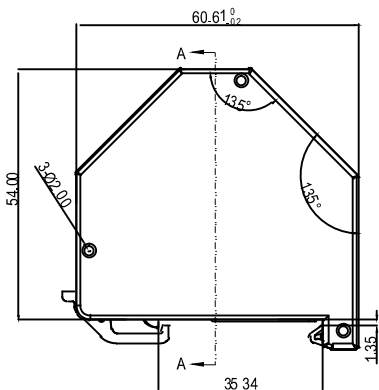
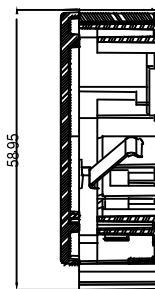
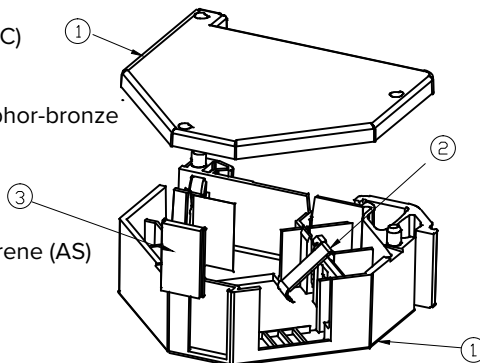
- ➔ Exceptional material properties and design - Providing a unique Century™ Lifetime Warranty.
- ➔ All boxes include covered labeling and snap-in colored icons - Providing elegant and professional outlet identification.
- ➔ All boxes include screws, cable ties and double-sides adhesive tape - Providing fast and easy termination.
- ➔ Detailed installation manual in English and Turkish - Providing clear and comprehensive instructions.
- ➔ Robust and installer-friendly design - Providing reduced installation and operating costs
- ➔ Unique DoubleSafe™ Quality Assurance Program - Providing lowest rejection rate available.



1. Polycarbonate (PC)

2. Ni coated phosphor-bronze Contact spring

3. Acrylonitrile Styrene (AS)



GENERAL PROPERTIES

Construction Materials	High impact, Flame-retardant Polycarbonate, UL 94 V-2.
Environmental Conditions	-40 to +60C at 0-90% RH (Non condensing)
Storage Temperature	-20 to +80C
Standard Color	Grey RAL 7035

ORDERING INFORMATION

HCS P/N	Description	Ports	Color
WDR-00100	DIN Rail Adapter for one keystone jack without cover	1	Grey
WDR-0010L	DIN Rail Adapter for 1 keystone jack with left cover	1	Grey
WDR-001LC	DIN Rail module holder, left cover	N/A	Grey
WDR-001RC	DIN Rail module holder, right cover	N/A	Grey